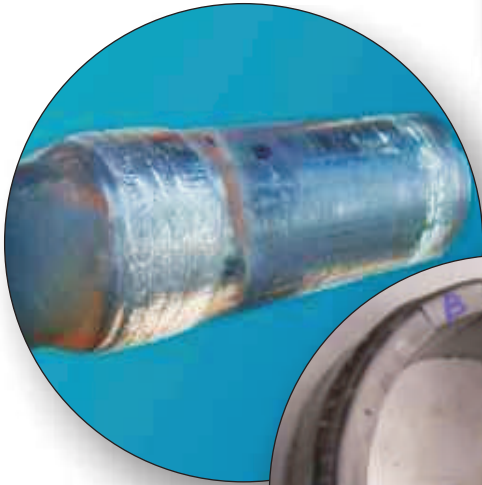




Postle Industries, Inc.  
5500 West 164th St.  
Cleveland, Ohio 44142  
Tel: 216-265-9000  
Email: [sparky@postle.com](mailto:sparky@postle.com)  
[www.hardbandingsolutions.com](http://www.hardbandingsolutions.com)

# POSTLE INDUSTRIES HARDBANDING LABORATORY



***“...Maximizing drill  
pipe performance  
and minimizing  
casing wear through  
superior hardbanding  
technology...”***

[www.hardbandingsolutions.com](http://www.hardbandingsolutions.com)

All customers and applicators are entitled to and have access to Postle Industries' extensive knowledge bank, lab facilities and metallurgical analysis as it pertains to all aspects of hardbanding and related procedures. Hardbanding is the oil industry's terminology for the hardfacing of tool joints for drill pipe, HWDP and collars. Postle Industries has been in the Hardfacing and wear business for over 40 years.

The key to Postle Industries' success as a hardbanding and hardfacing supplier is the ability to quickly analyze and address welding issues in a timely manner. There are a number of tools available to the Postle Staff and yourself as detailed below.

### **Weld Lab:**

The Postle Weld Lab is equipped with the latest in arc welding equipment. Customer parameters can be quickly duplicated for analysis. Preheat and postheat conditions can be imposed to simulate field experience.



The equipment is also a valuable tool in the development of new and improved hardbanding products.

### **Abrasion Testing:**

Abrasion, the most popular cause of wear, is measured on hardbanding deposits using the ASTM G-65 Dry Sand procedure, the most popular abrasion test.



Quite simply, a test piece is placed in the holder and loaded with a 30 pound force against a rotating rubber wheel. Closely controlled sand is then trickled down between the test piece and the rubber wheel. At the end of a predetermined number of rotations, the sample is then examined for weight loss. It is this weight loss which determines the abrasion resistance of the hardbanding. These numbers are compared to other products in our massive database.

### **Hardness Testing:**

One of the many key indicators of a hardbanding's performance is its hardness. Hardness should not be confused with abrasion resistance. Two metals with the same hardness can have vastly different abrasion resistance values. Postle Industries employs Rockwell and Brinell hardness testers, as well as micro hardness testers. Hardbanding samples can be quickly checked for hardness consistency using the Rockwell or Brinell hardness testers. In the case where microscopic hardness is desirable, such as in

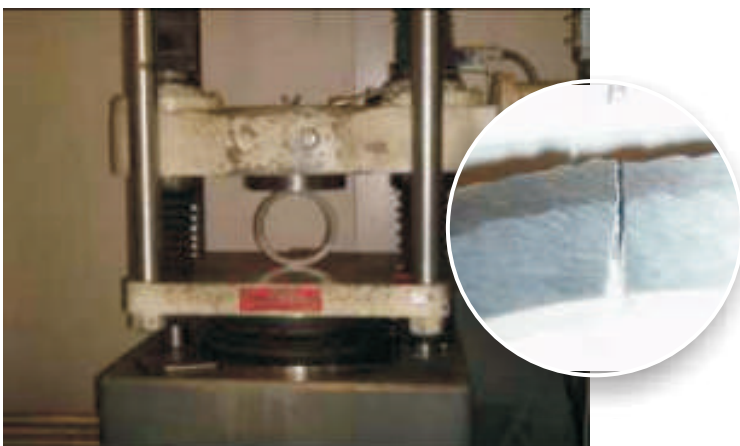
the hardbanding Heat Affected Zone, a micro hardness profile can be generated using the micro hardness tester. It is possible to evaluate the hardness of the weld bead, the fusion zone, the heat affected zone and on into the base material. Such effects as



preheat, cooling rates, and previously hardbanded structures can be evaluated.

### Ring Test:

The ring test is used to determine the integrity and compatibility of the hardbanding and its relationship to the base material or previously hardbanded product. A 1 inch wide section of a hardbanded tool joint is subjected to compression. A load is applied until the ring cracks. The path of the crack is closely analyzed. If the hardbanding has good integrity, the crack will continue on through



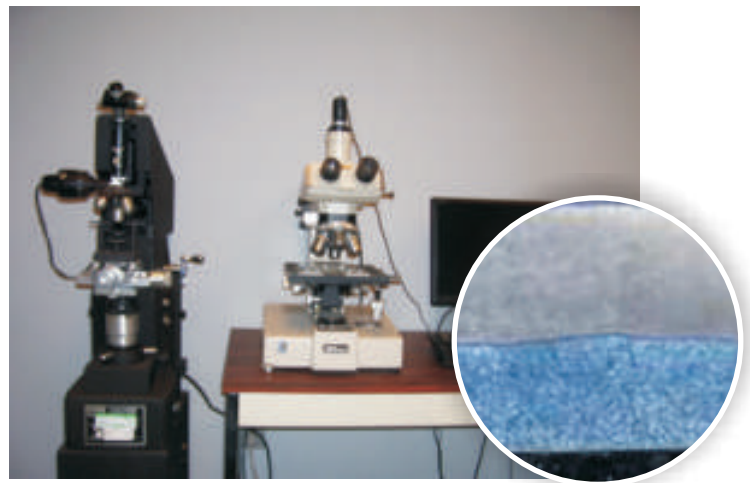
the base material. If the integrity is not good, then the hardbanding crack will follow the fusion zone and ultimately lead to spalling.

### Sample Preparation:

To examine a hardbanding structure under the microscope, the tool joint must be



sectioned and prepared. This requires careful sectioning, mounting, and polishing with diamond particles. The sample is then etched to bring out the structure.



The sample is then placed on the microscope and examined up to 1000X. Many hardbanding samples consist of micro particles, which can easily be seen using the above techniques.

### Chemical Analysis:

Quite often a chemical analysis is required of the hardbanding itself. There are many techniques used to derive the level of each element within the hardbanding. Postle Industries routinely employs outside vendors with specific talents to determine the specific chemical analysis of the hardbanding.

## Casing Wear Test:

How is a hardbanding rated as being “Casing Friendly”? This is done on a testing apparatus by Mohr Engineering which utilizes a section of casing and an actual hardbanded tool joint. The test consists of rotating a hardbanded tool joint at 155 RPM’s in a casing with a side load of 3000 lbs. for 8 hours. Periodically the test is stopped and the wear scar geometry is measured. At the end of the 8 hour test, the data is plotted and curve fitted.



A number of very valuable parameters are derived that help describe the effects of a certain hardbanding on casing wear. One of these is the “Wear Factor” in which very low numbers are desirable. Another is the amount of casing worn in 8 hours. Again, low numbers are desirable. A third parameter is the number of revolutions that are required to remove 12.5% of the casing. In this case, higher numbers are desirable.

PROGRESS  
THROUGH  
INNOVATION  
&  
SERVICE

## Web Conference:

With customers worldwide, communication can sometimes become difficult, but Postle Industries brings lab findings right into your office or the field. A picture is worth a thousand words, and there is nothing like seeing the lab results on your screen.



Photomicrographs, hardness profiles, charts, videos, and other media come alive during either a one on one conversation or a multi attendee conversation.

**In summary**, Postle Industries prides itself on the use of the best metallurgical tools available to help define and implement the production of quality hardbanding products. These tools are also used in the analysis of any hardbanding issue that might occur in the field. In addition, Quality Assurance specifications and procedures are monitored with these tools and more. The lab is continually in the process of upgrading and improving. Our metallurgical laboratory is a valuable tool and one of our finest assets.

## Technical Centers

### NORTH & SOUTH AMERICA CHINA • JAPAN

Postle Industries  
Cleveland, OH 44142  
USA  
Telephone: 216-265-9000  
Email: [sparky@postle.com](mailto:sparky@postle.com)

### CANADA

Leroy Billesberger  
Canada  
Tel: (604) 701-6533  
Email:  
[leroy@weldco.ca](mailto:leroy@weldco.ca)

### MIDDLE EAST

Nigel Speedy  
Dubai, U.A.E.  
Tel: +971 4 813 8000  
Email:  
[nspeedy@woodhouse-dubai.com](mailto:nspeedy@woodhouse-dubai.com)

### SOUTHEAST ASIA

David Moore  
Republic of Singapore  
Tel: +65 9830 1828  
Email:  
[david.moore@ace-octg.com](mailto:david.moore@ace-octg.com)

### AUSTRALIA • NEW ZEALAND

Richard Mascull  
New Plymouth, NZ  
Tel: +64 06 755 3303  
Email:  
[sales@duroweld.co.nz](mailto:sales@duroweld.co.nz)

### EUROPE • RUSSIA WEST AFRICA

Colin Duff  
Scotland, UK  
Tel: +440 1563 820 505  
Email:  
[colin@mathiesonweld.co.uk](mailto:colin@mathiesonweld.co.uk)